



## **College Uniform Policy and Procedures**

### **1. Purpose**

To ensure that the dress requirements at Gilmore College are effectively managed.

### **2. Policy**

- The Principal is responsible for establishing policy and procedures that manage school dress requirements at the College.
- The College Uniform Policy is developed by the College Board in accordance with the Department of Education policy and guidelines on dress standards for students in public schools.
- All students are required, as a condition of their enrolment, to comply with the College Uniform.
- Upon enrolling their children at Gilmore College, parents/caregivers agree to support and reinforce the College Uniform with their children.
- Denim items are excluded from the College Uniform.
- Hooded jumpers are excluded from the College Uniform.

### **3. Procedures**

#### **3.1 Underpinning Principles**

At Gilmore College, the following principles guide the standards of what is acceptable clothing to be worn by students and is therefore the designated uniform.

These principles are:

- fosters and enhances the public image of the College.
- assists in building aspirational students who represent the College with pride.
- ensures students are safely dressed for specific College activities.
- enables teachers to quickly identify our own students from intruders on College premises.
- encourages equity among students.
- prepares students for work as many work places have dress and safety codes.

- is economical for parents/caregivers.

### **3.2 Developing and Changing the College Uniform**

Section 128c of the *School Education Act (1999)* delegates responsibility to the College Board to determine the College Uniform in consultation with the College community.

Changes to the College Uniform are based on:

- advice from students, parents/caregivers, and staff.
- information from regular reviews of the uniform.

### **3.3 Middle School (Years 7 – 9)**

Polo shirt (dark navy blue panel).

White sports polo

School navy micro fibre zip jacket.

Plain navy jacket – no hood

Plain navy trousers or track pants

Plain navy shorts or skirt

School dress

### **3.4 Senior School (Years 10 – 12)**

Polo shirt (ice blue panel).

White sports polo.

School navy micro fibre zip jacket.

Plain navy jacket – no hood

Plain navy trousers or track pants

Plain navy shorts or skirt

School dress.

### **3.5 Footwear**

Flat, fully enclosed footwear is a requirement at the College. This is a health and safety issue.

### **3.6 Hats**

Students are encouraged to wear hats or caps. These must be removed while inside the College buildings.

### **3.7 Other permitted uniform items**

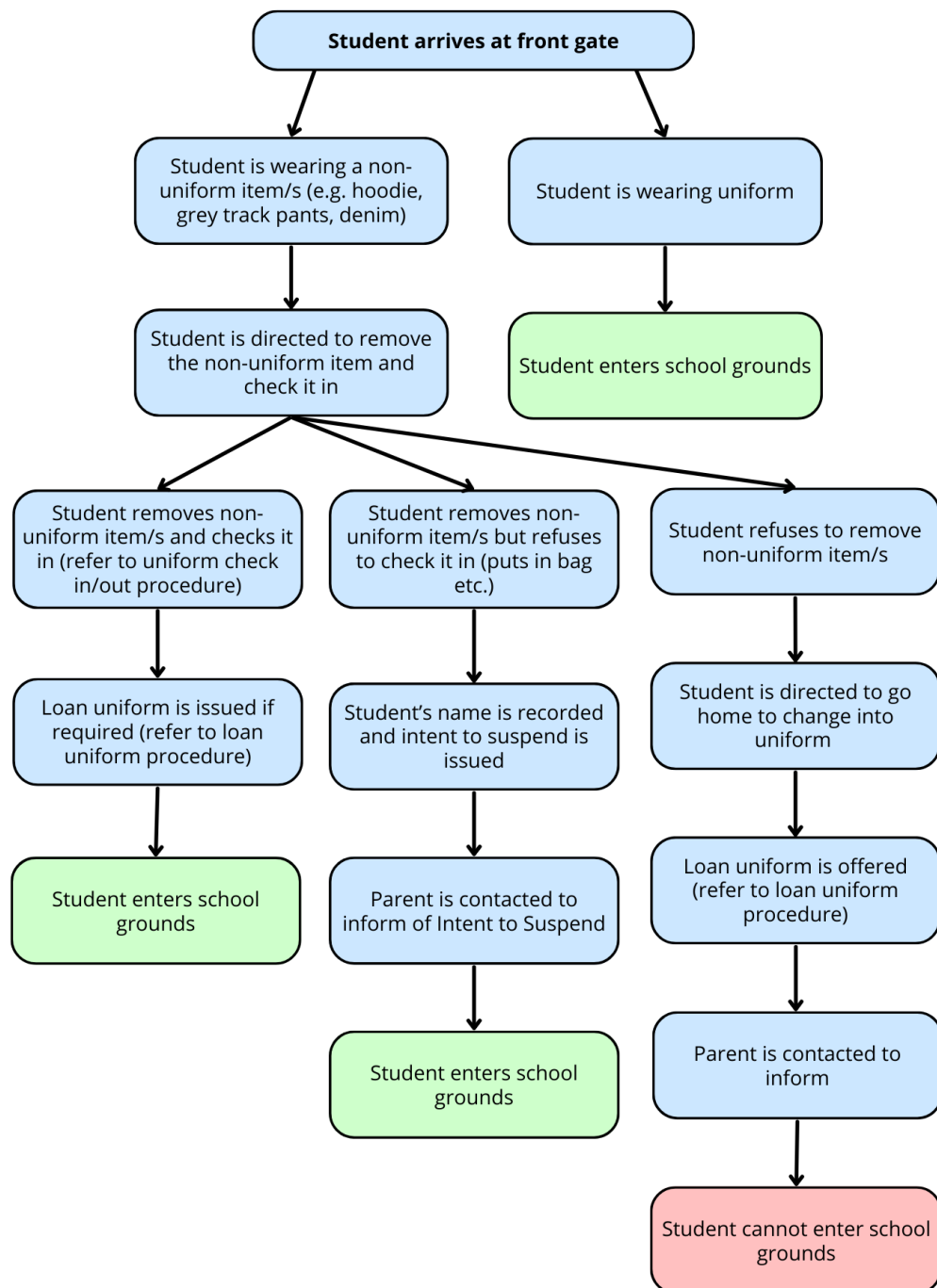
White, black or navy long or short sleeved shirts can be worn underneath the College polo shirt. Black or navy tights or leggings can be worn underneath plain navy shorts, trousers or skirt.

### 3.8 Excursions

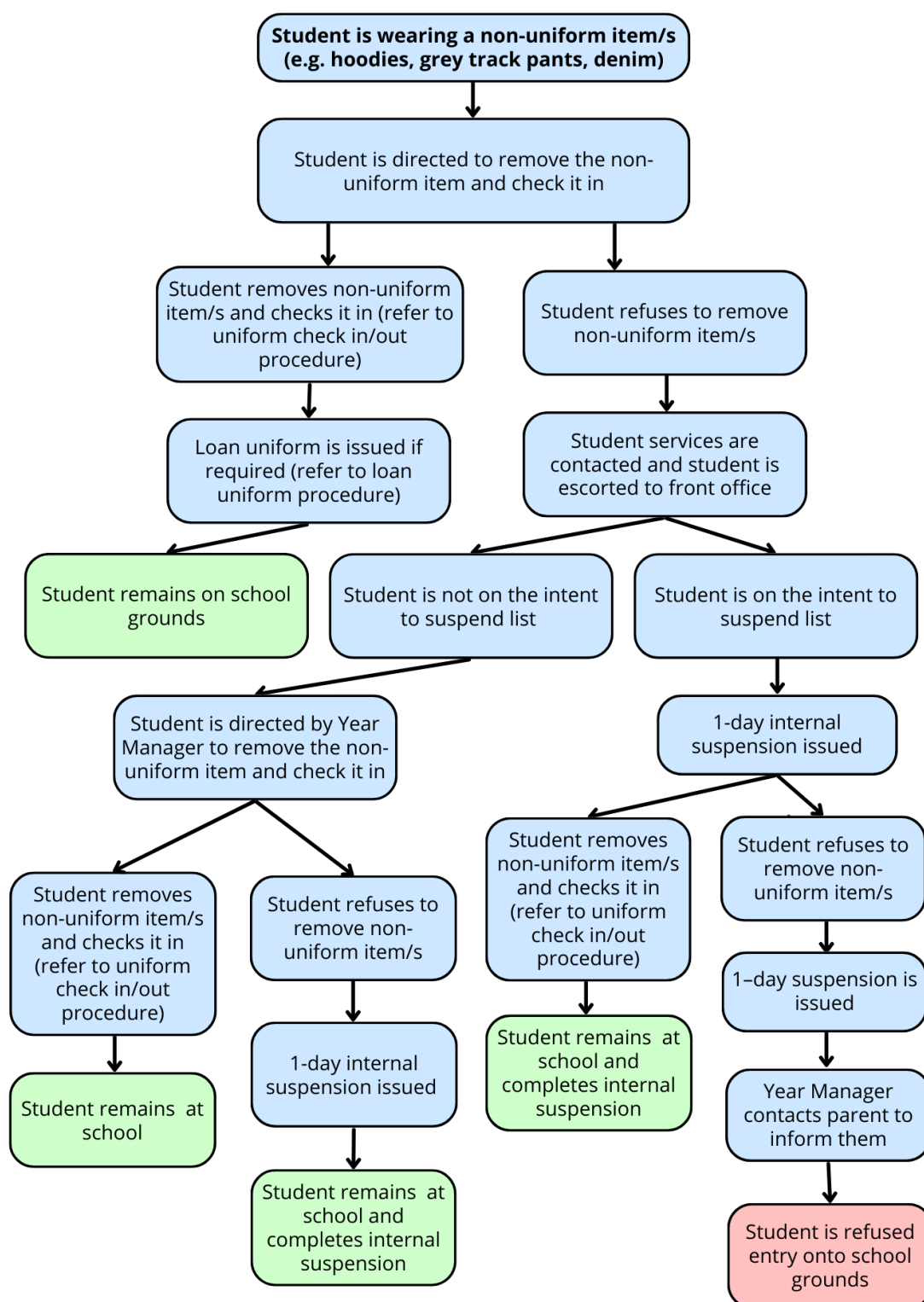
All students will be expected to wear full College uniform on excursions.

### 3.9 Uniform Processes

Process A: When the student arrives at school



## Process B: When the student is at school



## 4. Document Control

<p><b>Owner:</b></p> <p><b>Created:</b></p> <p><b>Modified:</b></p> <p><b>Approved:</b></p> <p><b>Next Review:</b></p> <p><b>Document location:</b></p> <p><b>Links to Regulatory Framework:</b></p>	<p>Associate Principal (Student Services)</p> <p>26 June 2013</p> <p>25 July 2013</p> <p>16 June 2022</p> <p>16 June 2022</p> <p>June 2024</p> <p>S:\AdminShared\Administration Staff\100 Administration\109 Policy\GILMORE POLICIES</p> <p>Legislation/Authority</p> <ul style="list-style-type: none"> <li>• Disability Discrimination Act 1992 (Cth)</li> <li>• Equal Opportunity Act 1984 (WA)</li> <li>• Occupational Health and Safety Act 2000 (NSW)</li> <li>• Racial Discrimination Act 1975 (Cth)</li> <li>• School Education Act 1999 (WA)</li> <li>• School Education Regulations 2000 (WA)</li> <li>• Sex Discrimination Act 1984 (Cth)</li> </ul> <p>Department Policies</p> <ul style="list-style-type: none"> <li>• Behaviour Management in Schools</li> <li>• Contributions, Charges and Fees</li> <li>• Dress Requirements for Students</li> <li>• Student Health Care</li> </ul>	<p><b>Implementation and Review:</b></p> <p>The Associate Principal (Student Services) is responsible to the College Executive for the continuous monitoring and review of the <i>College Uniform Policy and Procedures</i>.</p>
--	---	--